

The Corporation of the Municipality of West Grey
By-law Number 73 - 2015

Being, a By-law to assume certain sections of land into the Municipality of West Grey Roads System;

Whereas, Section 26 of the Municipal Act, S.O. 2001, Chapter 25, as amended, provides that all highways established by a by-law of a municipality on or after January 1, 2003 are highways unless closed;

And whereas, Section 31 (2) of the Municipal Act, S.O. 2001 Chapter 25 provides that after January 1, 2003, land may only become a highway by virtue of a by-law establishing the highway;

And whereas, the West Grey Director of Infrastructure and Public Works has confirmed that Phase 1 of the Marshall Heights Subdivision identified as part of Plan 16M29 has now been completed;

And whereas, the Council of the Corporation of the Municipality of West Grey deem it expedient and in the public interest to incorporate certain parcels of lands into the highway road system of the Municipality of West Grey;

Now Therefore the Council of the Corporation of the Municipality of West Grey enacts as follows:

1. **That** the lands shown on Schedule "A" attached to and forming part of this By-law, being Phase 1 of the Marshall Heights Subdivision consisting of Lots 1 to 7 inclusive and Lots 23 to 31 inclusive, are hereby established as part of the common and public highways of the Corporation of the Municipality of West Grey.
2. **That** this by-law shall come into full force and effect upon the final passing thereof.

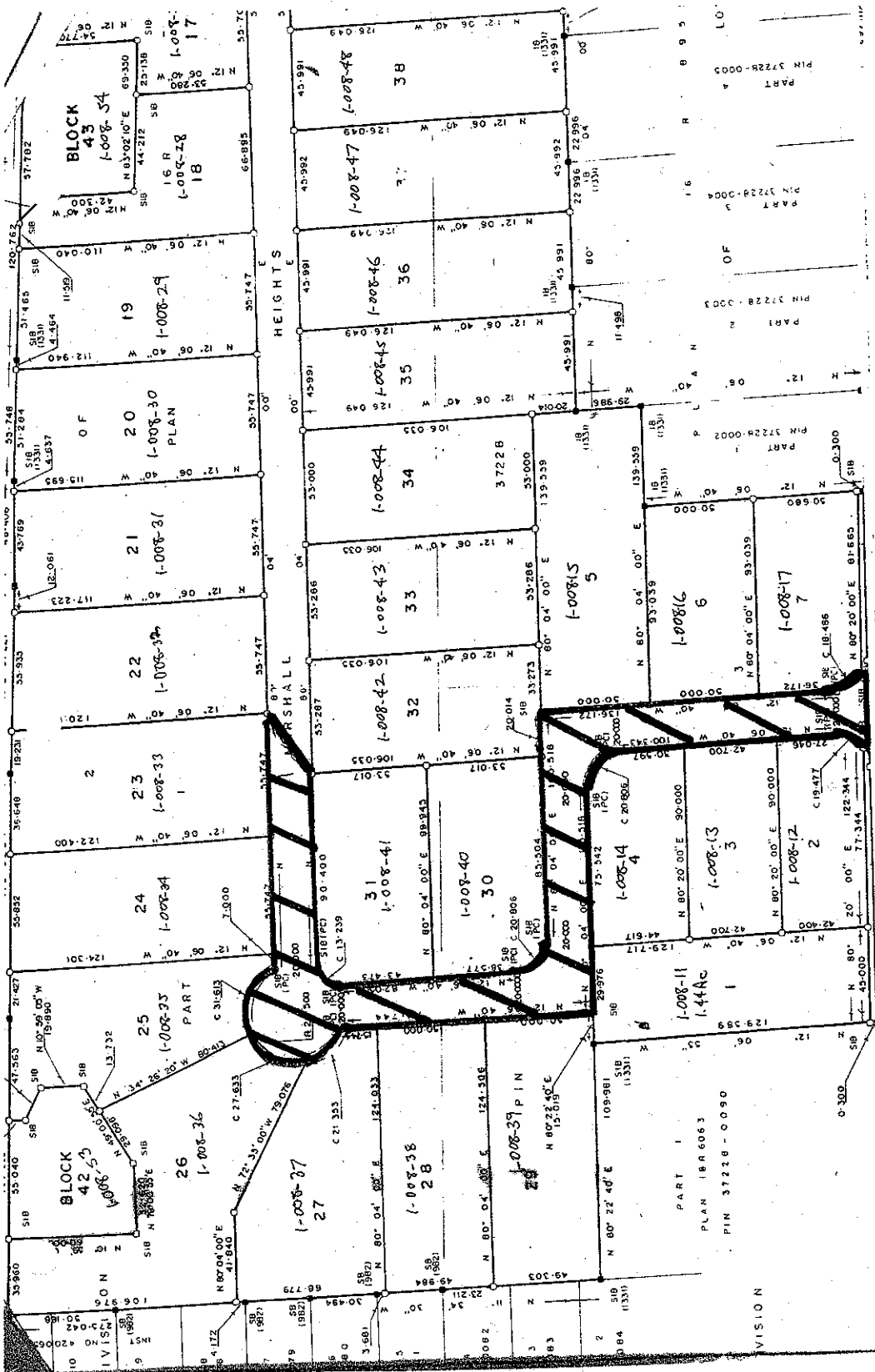
* * * * *

Read a first and second time this 2nd day of November, 2015.

Read a third time and finally passed this 2nd day of November, 2015.

(Signed)
Kevin Eccles, Mayor

(Signed)
Larry C. Adams, CAO/Deputy Clerk



- Lands To Be Assumed Into Municipal Roads System